



Ann Arbor Area Transportation Authority

People, Progress and Promises Kept

Citizen Report: Fiscal Year 2018

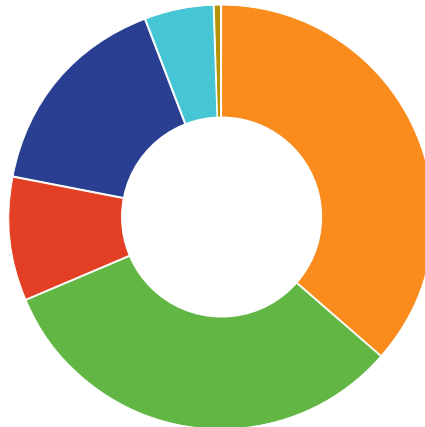
October 1, 2017 – September 30, 2018

Financials

Fiscal Year 2018

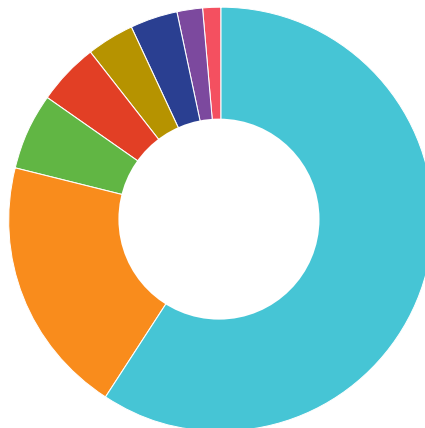
2018 Operating Revenue

Local Property Taxes:	35.8%
State:	30.9%
Federal:	9%
Sponsored/Passenger Fares:	18.4%*
Other Cities & Townships:	4.9%
Other:	1%



2018 Operating Expenses

Employee Costs:	56.9%
Purchased Transportation:	22.3%
Purchased Services:	6%
Materials & Supplies:	4.4%
Fuel & Lubricants:	3.9%
Other:	3.4%
Insurance:	1.9%
Utilities:	1.2%



*Passenger revenue paid by other organizations includes the Federal appropriation and matching State revenue earned by the University of Michigan's operation of their transportation system that is received by AAATA and credited to the M-Ride program

Demonstrating Financial Stewardship

TheRide received the Distinguished Budget Presentation Award by the Government Finance Officers Association (GFOA) for its Fiscal Year 2018 Operating and Capital Budget.

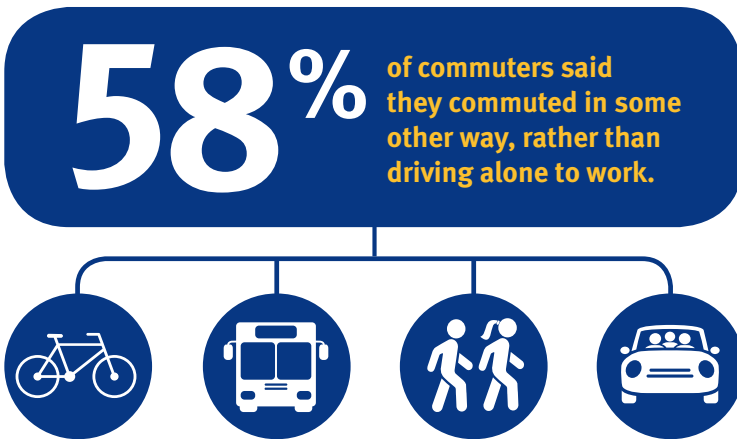


Catherine McClary, Washtenaw County Treasurer and Immediate Past President of the Michigan GFOA (right) presents the Distinguished Budget Presentation Award to Phil Webb, Manager of Finance (center) and John Metzinger, Deputy CEO Finance & Administration (left)



Supporting Businesses and Their Employees

A recent survey of downtown Ann Arbor businesses and their employees highlights the important role the getDowntown program serves in supporting businesses on a daily basis.



Photography: Marc-Gregor Campredon

Community Engagement

Working with our riders, the community and stakeholders, we explored new ways to improve services, fares and facilities. Resident feedback was collected and will inform the vision for our future.

Visit [TheRide.org/AboutUs/Initiatives](https://theride.org/about-us/initiatives) to learn more about our current initiatives.



Mobility Innovations

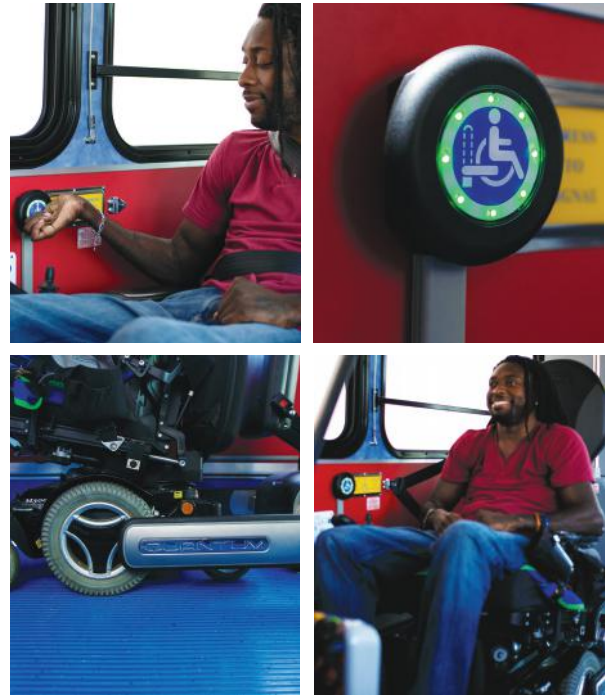
TheRide is testing creative and innovative ways to improve the public transit experience.

To that end, we're installing **virtually autonomous wheelchair securements** (developed by QUANTUM) on ten buses. Riders with disabilities will be able to secure their wheelchair or mobility device without any help from the driver.

Plus, Mobility Rising (developed by Feonix) will help individuals with disabilities locate bus stops and identify their destinations using **assistive real-time technology**.

And, **driver alert software** (developed by Humanising Autonomy) will predict pedestrian behavior to improve public safety.

Funding provided by the Michigan Department of Transportation (MDOT) through its Michigan Mobility Challenge Grant program and by the Michigan Economic Development Corporation (MEDC) through their PlanetM pilot program.



Family of Services

Total Ridership for 2018:

6.9 Million

including Fixed-Route, NightRide, AirRide, A-Ride, Senior GoldRide, Express Routes, FlexRide and MyRide



6,617,835
local fixed route rides



109
vanpools



91,307
rides



26,065
rides



137,750
rides



24,165
rides



13,182
rides



830
spots used daily



10,902
rides



1,089
rides



133
registered carpools



Thank You for 50 Years

We launched TheRide service as the Ann Arbor Transportation Authority in 1969, and we're celebrating our 50th anniversary in 2019.

Join us in celebrating our history by sending us your most memorable experience using TheRide.

Share your memories by:
Emailing Marketing@TheRide.org

 /CatchTheRide

 /CatchTheRide

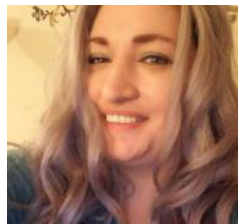


TheRide is YOUR ride:



"The buses are clean, on time, and the drivers are so friendly."

Ingrid



"I cannot emphasize enough just how much your A-Ride program improves my mornings."

Nikki



"You feel confident that you can do things on your own."

Michael



"We thank the citizens of Ann Arbor, Ypsilanti and Ypsilanti Township who overwhelmingly approved the renewal of our transit millage in August 2018. Because of you, we can continue to help you get to work, shopping and friends and family."

– Matt Carpenter, CEO

Board of Directors

Eric Mahler, Chair
Eli Cooper, Treasurer
Kyra Sims, Secretary
Roger Hewitt
Michael Allemang
Sue Gott
Prashanth Gururaja
Larry Krieg
Kathleen Mozak-Betts
Jesse Miller

Member Communities

City of Ann Arbor
Christopher Taylor, Mayor

City of Ypsilanti
Beth Bashert, Mayor

Ypsilanti Township
Brenda Stumbo, Supervisor

Purchase of Service Communities

Pittsfield Township
Mandy Grewal, Supervisor

Superior Township
Kenneth Schwartz, Supervisor

Scio Township
M. Jack Knowles, Supervisor



Ann Arbor Area Transportation Authority
Dawn Gabay Operations Center
2700 S. Industrial Hwy. | Ann Arbor, MI 48104

734-996-0400 | TellUs@TheRide.org



@CatchTheRide